

CONTACT US

Address: Room 1107, Block B, Fuli Center, Hefei
Road, Tianjin,China

Tel: 86 22 87528810

Fax: 86 22 87528810

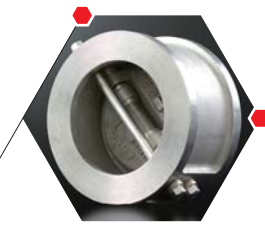
Website: www.siscovalve.com

E-mail: sales@siscovalve.com



RCV010

Double Door Wafer Check Valve



SISCO VALVE

COMPANY PROFILE

SISCO is a competitive valve manufacturer that was first incorporated in 1995. As an OEM manufacturer, we specialize in premium industrial valves. Our main products include the butterfly valve, gate valve, and check valve. These products are utilized extensively by industries such as petroleum, chemical engineering, sewage treatment as well as air and water treatment. Customization services are available upon request.

SISCO owns 12,000 square meters of real estate. We maintain operations with a staff of more than 200 employees, many of whom are senior engineers and experienced technicians. Our modern facilities include 11 workshops and 3 automatic assembling machines that have been specialized for dedicated functions such as assembly, processing, painting, and testing. A complete array of advanced equipment ensures the quality of our products.

We have successfully passed the certification of internationally recognized standards such as CE, DNV, GOST, and ISO9001. Our manufacturing techniques implement state-of-the-art technologies to guarantee high processing efficiency and integrity. This level of enhanced productivity is the underlying basis for our always-on-time delivery policy. As a mature and responsible enterprise, we strive to provide considerate and attentive after-sales services.

SISCO exports worldwide to regions including the Americas, Europe, and the Middle East. Our valves have also exhibited outstanding performance on domestic markets, serving as the control node for systems such as petroleum pipelines, heat supply pipelines, water supply pipes, chemical pipelines, and sewage treatment.

Product quality has always been our top priority. All SISCO employees are trained in proper handling and operating techniques. We have developed quality control protocols to streamline everything from raw material procurement to machining, inspection, and logistics.

Please contact us with product and service related inquiries! We look forward to your correspondence.

Double Door Wafer Check Valve **RCV010** Series



RCV010

Butterfly Valve Series

PRODUCTION CAPABILITY AND CERTIFICATE

01 02



RCV010

Butterfly Valve Series

FIELD OF APPLICATION

03 04

- Chemical
- Beverage
- Brewing/Wine Making
- Pharmaceutical
- Food Processing
- Water & Wastewater Treatment
- Petroleum Refining & Oilfield
- Transportation
- Ultrapure Water
- Marine
- Pulp & Paper
- Mining
- Power/FGD
- Nuclear Power
- Irrigation
- Textile
- Desalination

DESIGN FEATURES

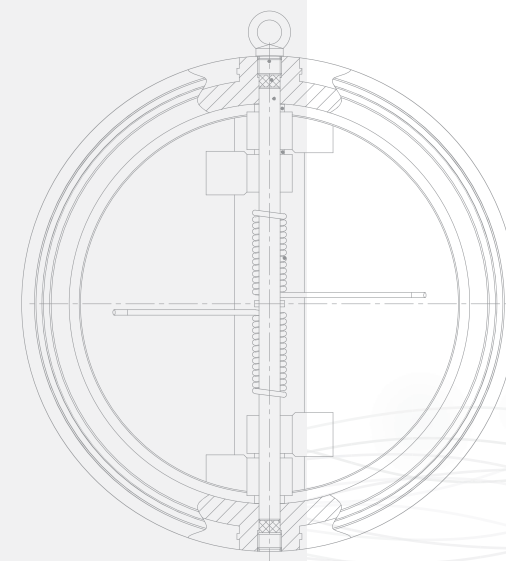
1. Minimizes piping support with the compact wafer style body;
2. To meet special applications and service conditions, RCV010 series can be offered with many different options, such as silicone-free cleaning, oxygen-cleaning, vertical service, left-hand operation, levers, weights and cushions;
3. For media containing fibrous matter or caustics, SISCO offers an external spring which eliminates the spring from the flow path. This will prohibit the possibility of fiber wrapping around the spring or chemical attack of the spring;
4. Maintenance is minimal with the field replaceable O-ring seat available in all styles and sized;
5. Low torque design, small fluid resistance, extremely high resistance to water hammer pressure;
6. Long lifetime and reliable performance.

Double Door Wafer Check Valve

RCV010

Series

SISCO RCV010 Series is the line of swing type double flanged, dual disc, resilient seated, heavy duty and large diameter valves design to meet the stringent requirements of water industry applications and to provide reliable performances under various working conditions. SISCO RCV010 series is design to meet the stringent requirements of wide range of industries that including:



RCV010

Butterfly Valve Series

GENERAL FEATURES

05  06

RCV010

Series



Body

A wafer type of short face-to-face design, body, bolts and all other parts are stainless steel material. The design possesses small volume, high strength and excellent anti-corrosive capacity.

Disc

The casting stainless steel or Aluminum Bronze double semicircular disc possesses the features of high strength, excellent corrosion resistance and good resistance to deformation against the water hammer pressure in long-term use.

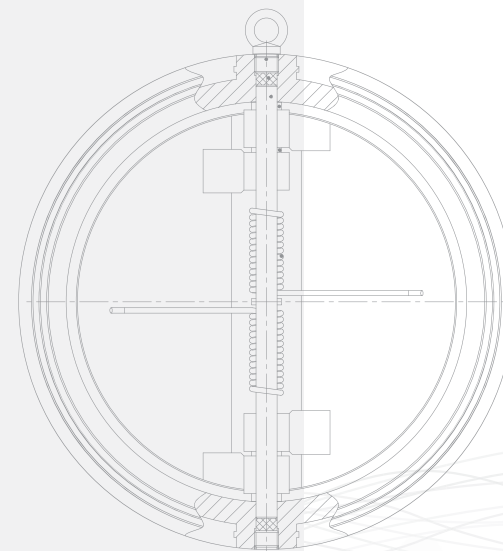
Spring

According to the actual need, the stainless steel spring can be flexible adjusted. The accurate calculation and precise design can ensure quick and non-blocked on/off of the disc.

Seat

Integrate vulcanizing EPDM seat prevents movement of the seat when open and close the disc and ensures the sealing of the valve.

Double Door Wafer Check Valve



STANDARD MATERIALS

Nominal Dimension	Nominal Pressure	Connectivity Standard	Part Name	Material
Available DN50 ~ DN600	Available PN10 or PN16	Available DIN PN10/16 or ANSI 150lb	Body	Cast Iron Ductile Iron
			Body Coating	Epoxy Coating
			Disc	ASTM 304 Stainless Steel
				ASTM 316 Stainless Steel
				Super Duplex Stainless Steel
			Disc Surfacing	Electroplate
				Nylon Coating
				Halar Coating
			Stem	ASTM 304 Stainless Steel
				ASTM 316 Stainless Steel
				ASTM 416/420 Stainless Steel
				Super Duplex Stainless Steel
Monel Metal				
Seat	NBR			
	EPDM			
	EPDM-Food Grade			
	Viton Silicon Rubber			

